



# The Beechfield

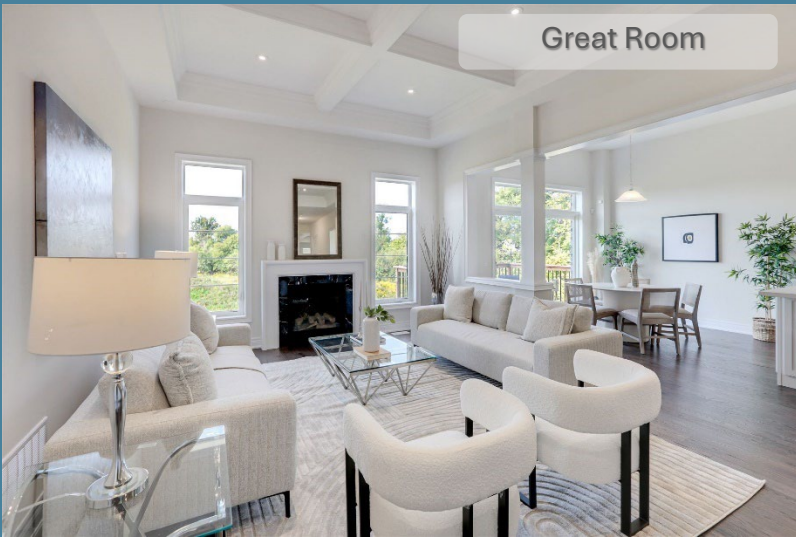
Elevation A

Lot 693

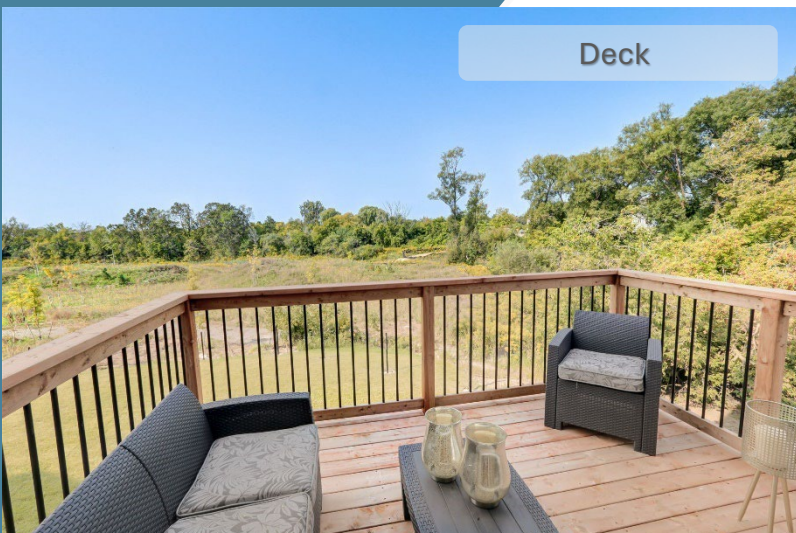
4,485 sq. ft.

(Including 874 sq. ft. of Finished Lower Level)

Great Room



Deck



\$ 2,350,900

- Premium Ravine Walkout Lot
- 5 Bedrooms + 4 ½ Bathrooms
- Open concept Kitchen
- Main Level Office
- Walkout Lower Level
  - Recreation Room
  - Bedroom
  - Full Bathroom
- 30 day Closing

More luxury features

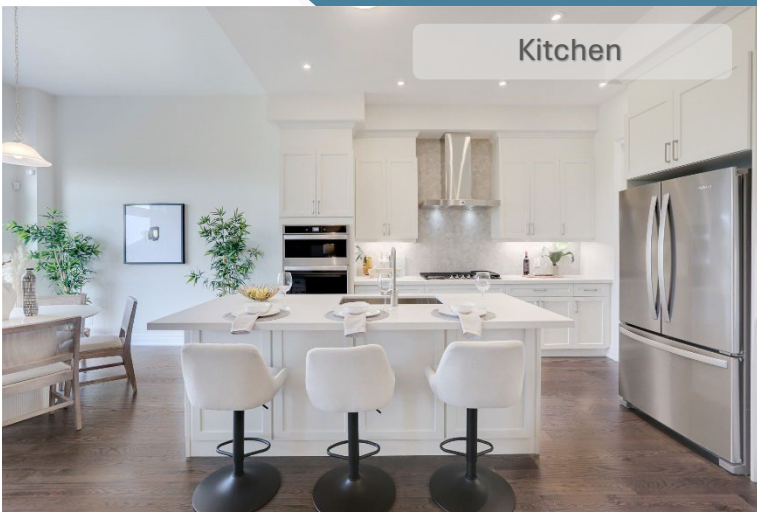
Sales Office

647-287-7042

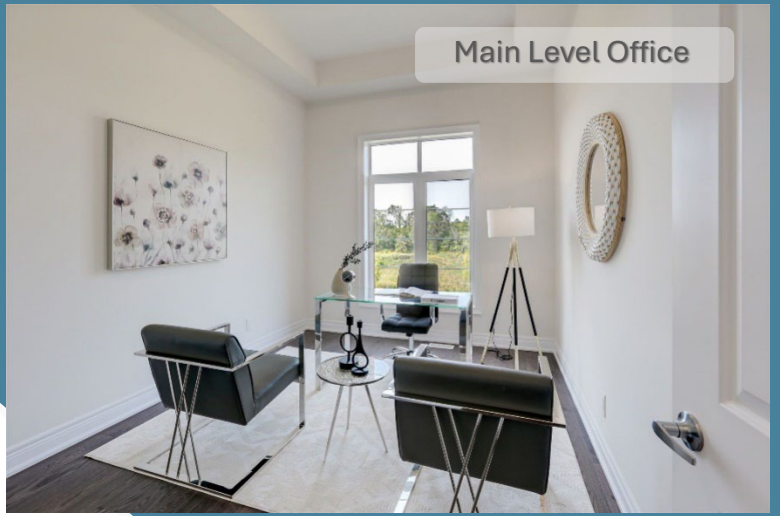
Whitby@heathwood.com

HEATHWOOD





Kitchen



Main Level Office

## Key Highlights

- ❖ 10' / 11' ceilings on the Main Level
- ❖ 9' ceilings on the Second and Lower Level
- ❖ 10' raised ceiling in Principal Suite
- ❖ 5" engineered hardwood on Main Level and Second Level hallway
- ❖ Oak stairs with metal pickets
- ❖ Fireplace with elegant mantle in Great Room
- ❖ Waffle ceiling detail in Great Room
- ❖ Coffered Ceiling details in Dining / Living Room, Foyer and Office
- ❖ Smooth ceiling throughout
- ❖ Caesarstone counter tops throughout
- ❖ Laundry Room with base sink cabinet and upper cabinets
- ❖ 8' safe and sound two panel interior doors throughout the first 2 Levels and 6'8" safe and sound in Lower Level

## Bathroom

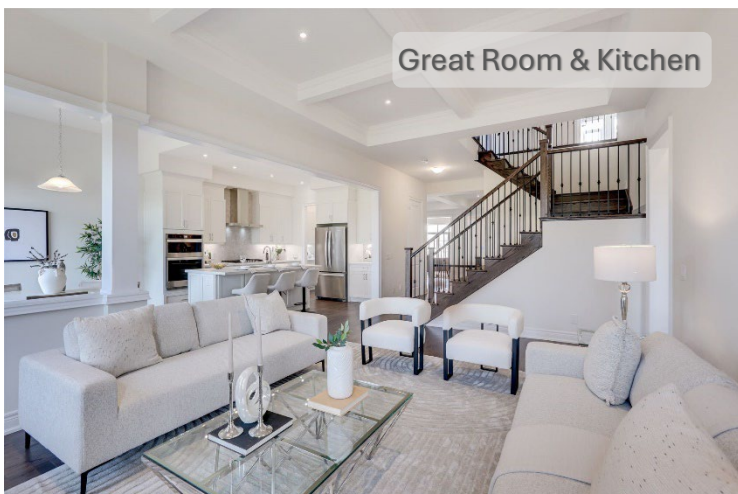
- Frameless Glass shower in Principal Ensuite and Ensuite 2
- Stand-alone soaker tub and double sinks in Principal Ensuite

## Kitchen

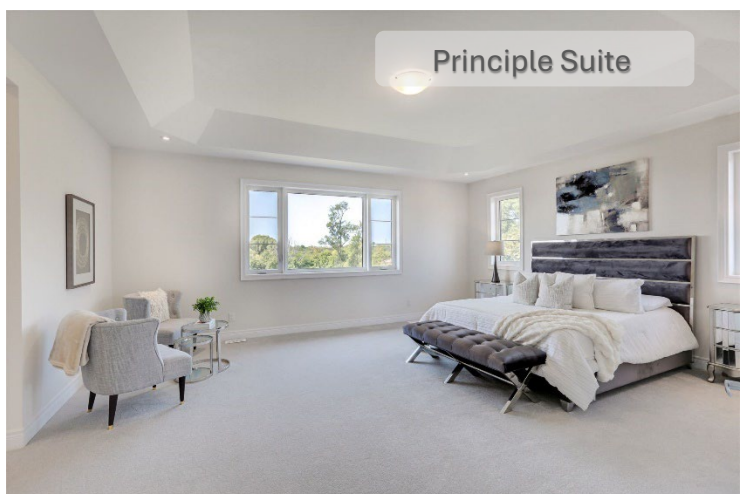
- Large Island
- Appliances including Gas Cooktop and Built-in Wall Ovens
- Walk in Pantry
- Served with upper cabinets and Beverage Fridge
- Hardwood flooring
- Pot drawers
- Valance lighting
- Soft close cabinets and drawers

## Electrical

- Pot lights throughout
- Keyless Entry
- Doorbell Camera
- Security Camera
- Central Vacuum System
- Garage door openers
- Exterior pot lights
- Conduit from Electrical Panel to garage for future electric vehicle
- 200 AMP



Great Room & Kitchen



Principle Suite